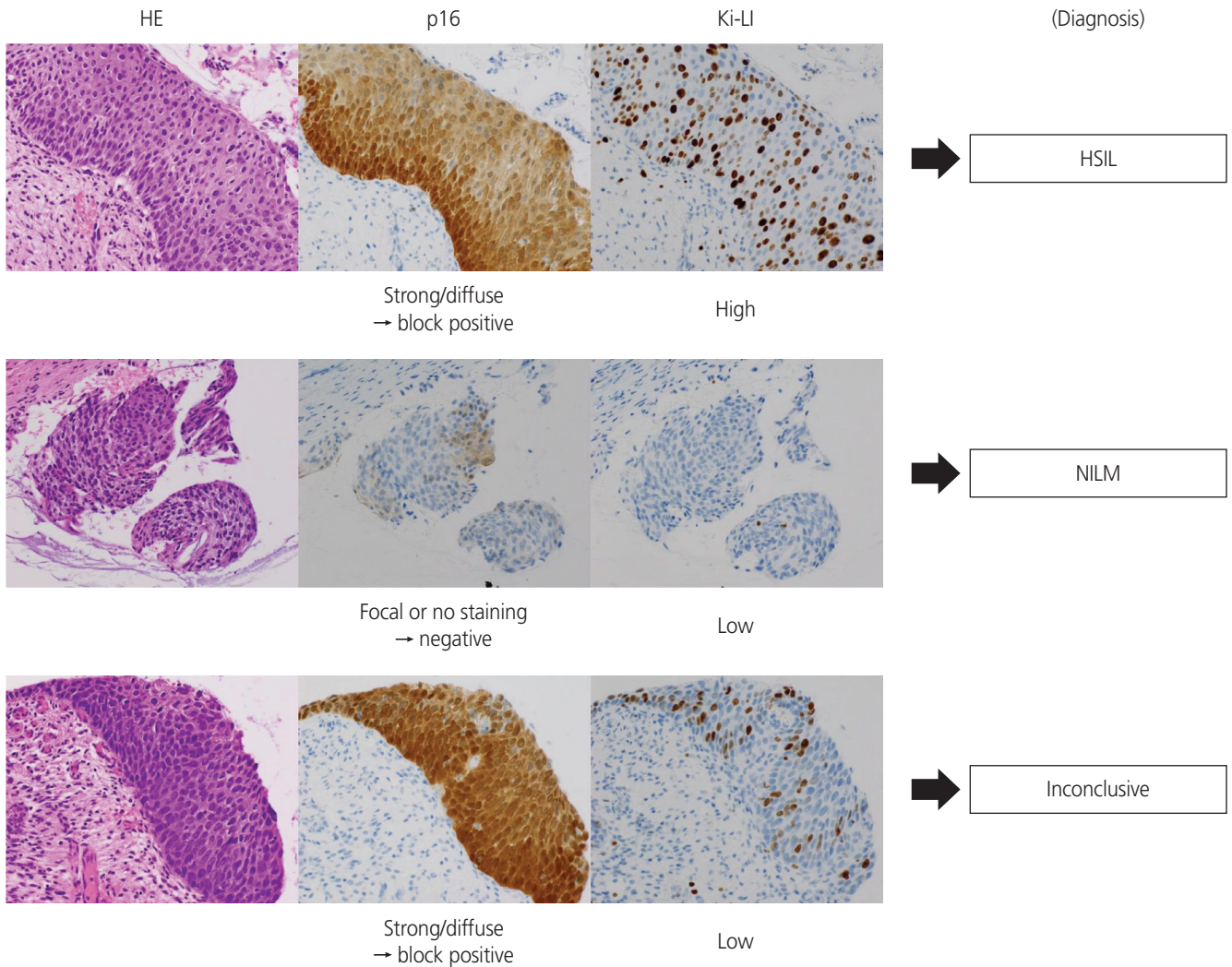


Morphologically HSIL vs. mimics
(such as immature squamous metaplasia, atrophy,
repair/regeneration due to inflammation)



Supplementary Fig. 1. Representative microscopic images and p16/Ki-67 IHC results in a case of "morphologically HSIL vs. mimics" at moderate magnification ($\times 200$). HSIL, high-grade squamous intraepithelial lesion; HE, hematoxylin and eosin; Ki-LI, Ki-67 labeling index; NILM, negative for intraepithelial lesion or malignancy; IHC, immunohistochemistry.